

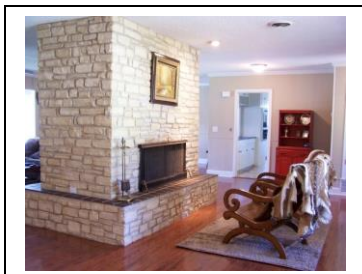
DEER ROCK RANCH 8484 RR 336

53 ACRES—UNRESTRICTED

LEAKEY, REAL COUNTY, TX



REAL ESTATE IS OUR BUSINESS.....  
OUR ONLY BUSINESS!



**FEATURES**

- *Frio River Frontage*
- *No Restrictions*
- *Hunting Allowed*
- *Nice trees*
- *Pretty Views*
- *Paved Road Frontage*
- *Spacious 3/3 Home*
- *Guest cabin*
- *Metal building*

FRIO CANYON  
REAL ESTATE  
102 WEST RR 337  
P.O. Box 1489  
LEAKEY, TX 78873

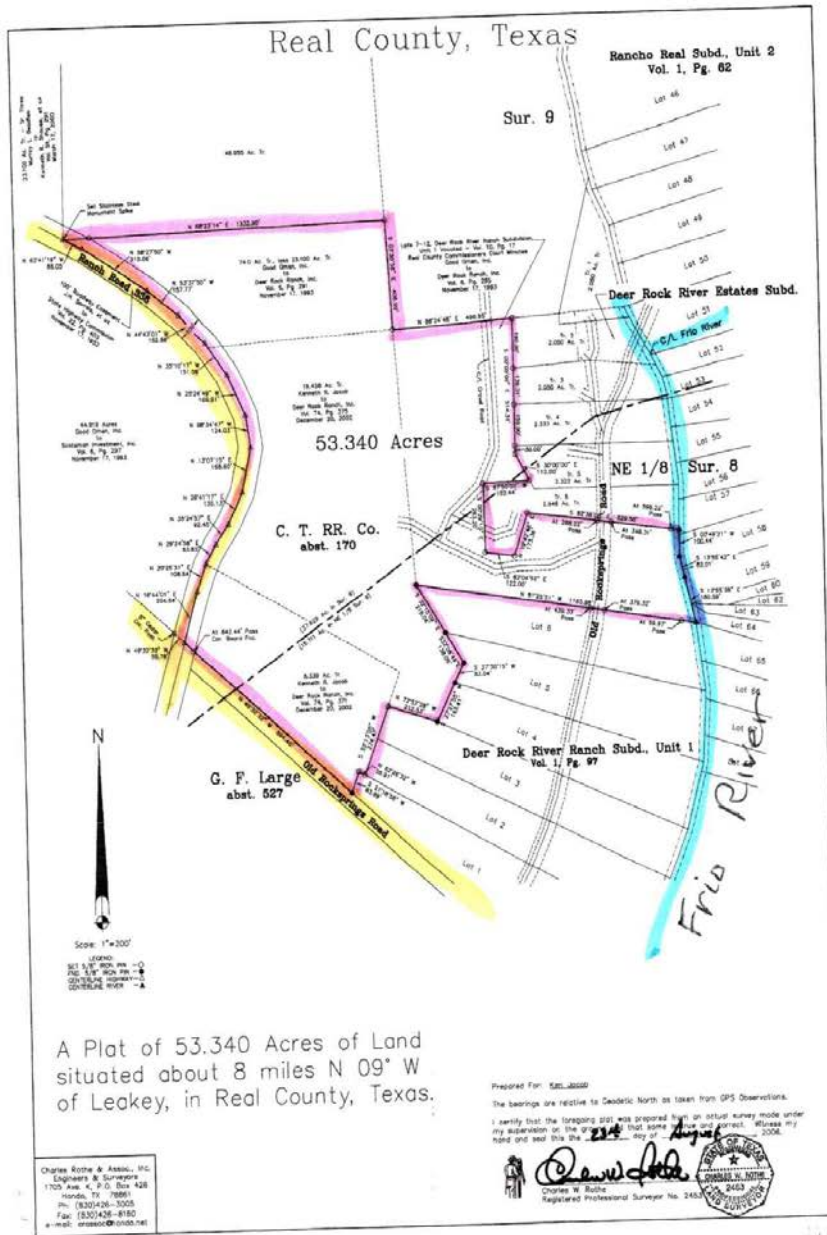


Frio River frontage, gorgeous views and a spacious and tastefully updated brick home are the focal points of this 53+ acre property. The home boasts a huge living area with beautiful hardwood floors and a massive double-sided fireplace. There are 2 master suites and a 3<sup>rd</sup> bedroom and bathroom on the other side of the house. An enclosed and attached garage, separate metal garage, barn, small guest house and in-ground pool with a rock patio all the way around and a huge rock fireplace, the complete the package. There is frontage on both RR336 and a paved county road lending commercial possibilities to the mix. The rolling, oak-studded land is unrestricted.

**\$799,000**

# Real County, Texas

Rancho Real Subd., Unit 2  
Vol. 1, Pg. 62



53.340 Acres

C. T. RR. Co.  
abt. 170

G. F. Large  
abt. 527

Sur. 9

Deer Rock River Estates Subd.

Deer Rock River Ranch Subd., Unit 1  
Vol. 1, Pg. 97

Frio River

A Plat of 53.340 Acres of Land  
situated about 8 miles N 09° W  
of Leakey, in Real County, Texas.

Charles Rott & Assoc., P.C.  
Engineers & Surveyors  
1700 Ave. 4, P.O. Box 428  
Hondo, TX 78861  
Ph: (830)436-3005  
Fax: (830)426-8180  
e-mail: crass@charlesrott.com

Prepared For: 500-00000  
The bearings are relative to Geodetic North as taken from GPS Observations.  
I certify that the foregoing plat was prepared from an actual survey made under  
my supervision on the ground that some of the corners of the same were  
found and set this the 22nd day of August, 2008.

*Charles W. Rott*  
Charles W. Rott  
Registered Professional Surveyor No. 2463